

SZX12

Parallel Light Zoom
Stereo Microscope



V S K Consmmate Co.,Ltd.

53/69 M.5 Nongbon , Praves Bangkok 10250 Tel : 02 7472155 Fax : 02 7473155

Email : admin@vskconsummate.com , vskcons@ksc.th.com Call : 086 341 3755



SZX12 Series, designed for industrial and biological research.



Stereo microscope is importantly applied in industry detection and life science. Based on Galileo optical system and man-machine engineering, SZX12 presents a real and perfect micro-image with easy operation, meets the research demands of biomedicine, microelectronics and semiconductor.

Sunny R&D team concentrates on details, strives for perfection.



High eye-point wide field eyepiece for clear image

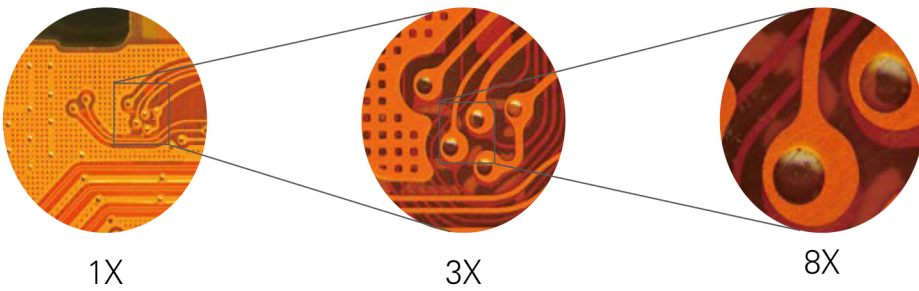
SZX12 with 10X/23mm eyepiece for wider field, is available for bright and clear image at edge. What's more, 15X and 20X eyepieces for option, meets the demand of high power. Eyepiece diopter is adjustable for different eyesights.

Coaxial coarse and fine focusing mechanism for fast operation

Coaxial mechanism is available to be fast focused, and lockable for long-term observation. Focusing knob with comfortable hand feel, release the fatigue from long time operation.

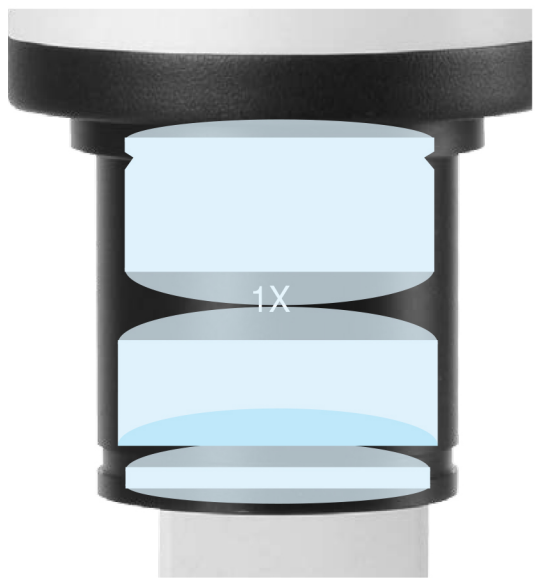
Tilting viewing head for comfortable operation

SZX12 with tilting viewing head from 5 to 45 degree, can be flexibly adjusted for different operators with different posture.



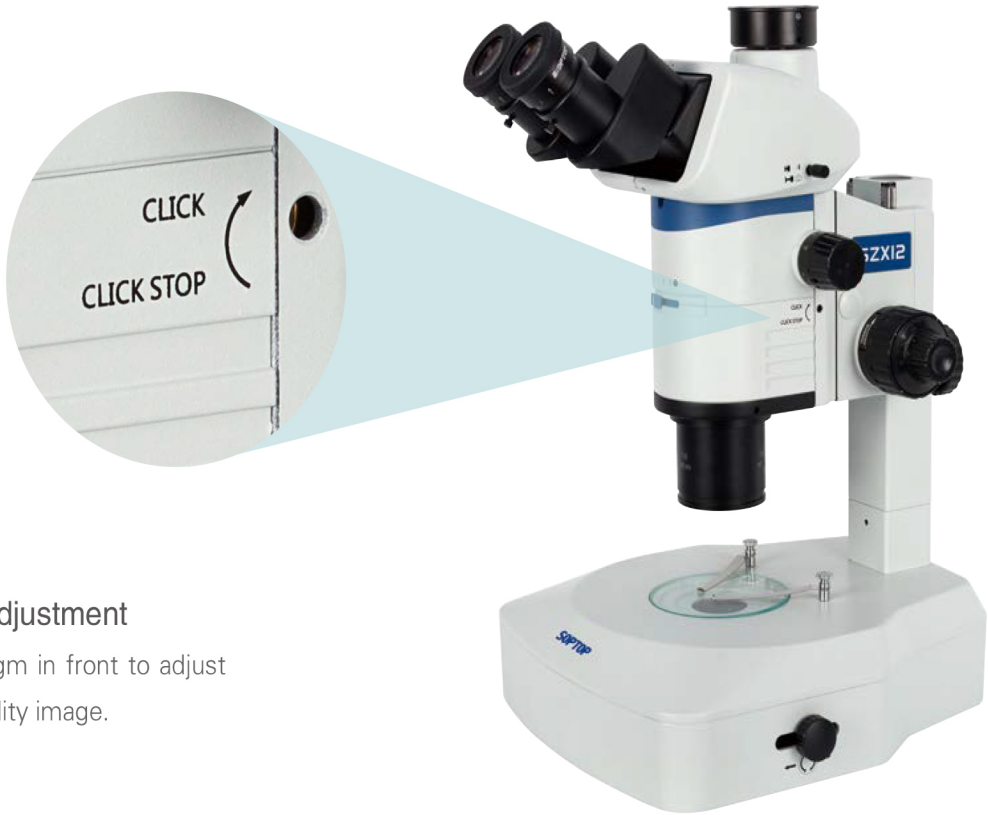
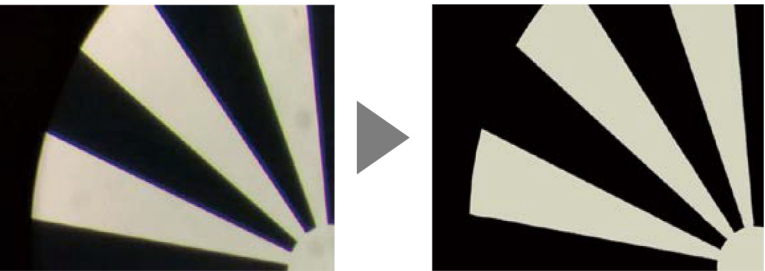
Large zoom ratio 12.5:1

SZX12 has large zoom ratio from 0.63X to 8X, with click stop for every main time, which can be manually unbind for zoom magnifying smoothly.



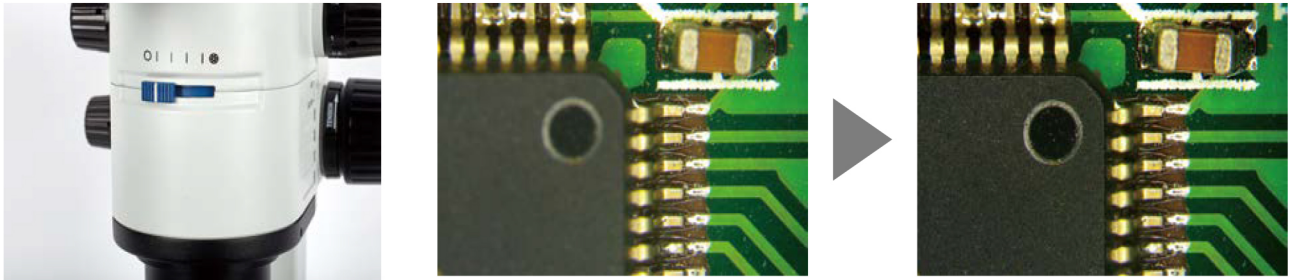
Apochromatic objective

Apochromatic design significantly improves the lens performance of color rendition. Correcting the axial chromatic aberration of red/green/blue/purple, and converge them on a focal plane, the objective is able to present the real color of the samples.



Aperture diaphragm adjustment

Shift the aperture diaphragm in front to adjust depth of field for high-quality image.



Rich experience in R&D, creates the unique microscope with reliable quality.



With Galileo optical system, presents super definition

Adopt Galileo optical design to achieve plan and high definition micro-image, meet the demand of scientific research.

Adjustable arm stand

Except for the 50mm coarse focusing distance, the focus holder is able to be lifted by adjusting lock screw. It is available to detect large sample.



Forearm holder

Compact and streamlined holder to support forearm, reduce the fatigue of arm and shoulder from long-time operation.

Mirror adjustment

Reflected mirror in the base, is 360 degree rotatable to control the light zone. With plan side and frosted side for different imaging effect, is suitable for various applications.

Humanized light intensity

Rotate the dimmer to adjust light intensity, the detailed percent of brightness will be displayed from the LCD on the base. It is helpful to record data of the best back light for sample observation.



LCD for displaying intensity and color temperature



Rotate for adjusting intensity

Optional color temperature

Adjust the color temperature to create a perfect imaging background for different samples in different work environment.



Color temperature adjustment

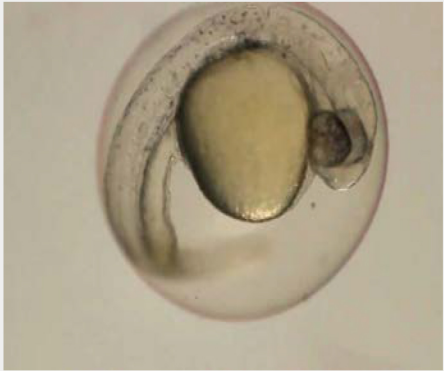


5600K at most for natural light (white)



3000K at least for warm light (yellow)

Being available for different applications, such as life science and industry detection, SZX12 with advanced imaging technology, is the best assistance for scientific research.



Zebra egg



Nematode



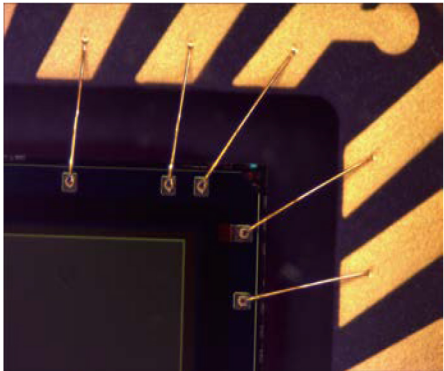
Bee leg

LIFE SCIENCE

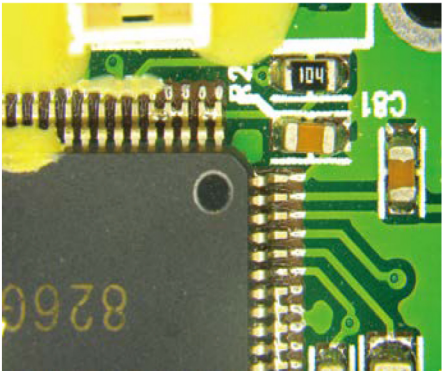
Support for life science research, meet the demands of biological experiment, chemical analysis and cell culture.

INDUSTRY DETECTION

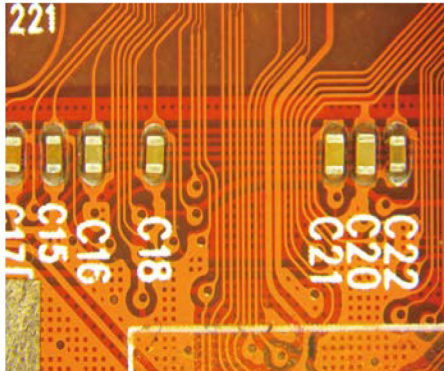
Indispensable testing tool, widely applied for surface detection of PCB, SMT, semiconductor chip, metal material and precision components.



Chip bonding



PCB



FPC



①



②



③



④



⑤



⑥



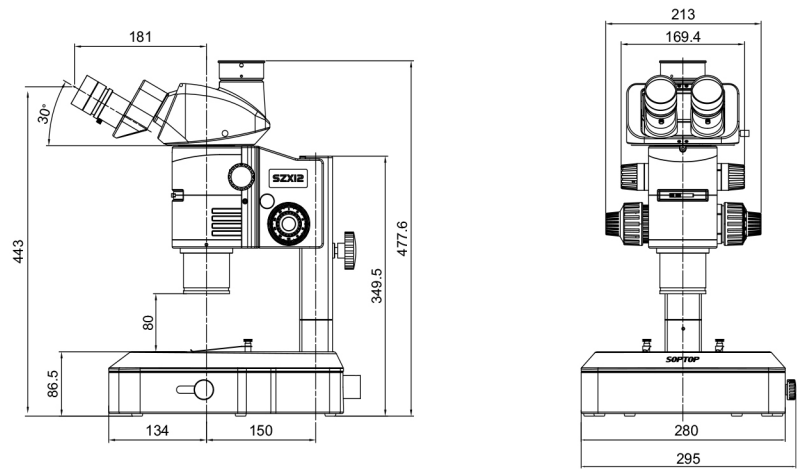
⑦

- ① High eye point wide field plan eyepiece PL10X23mm
- ② 1X & 2X main objectives
- ③ Coaxial illumination
- ④ LED light box
- ⑤ Single fiber
- ⑥ LED ring lamp (200 bulbs)
- ⑦ 0.5X / 0.65X / 1X C-mounts

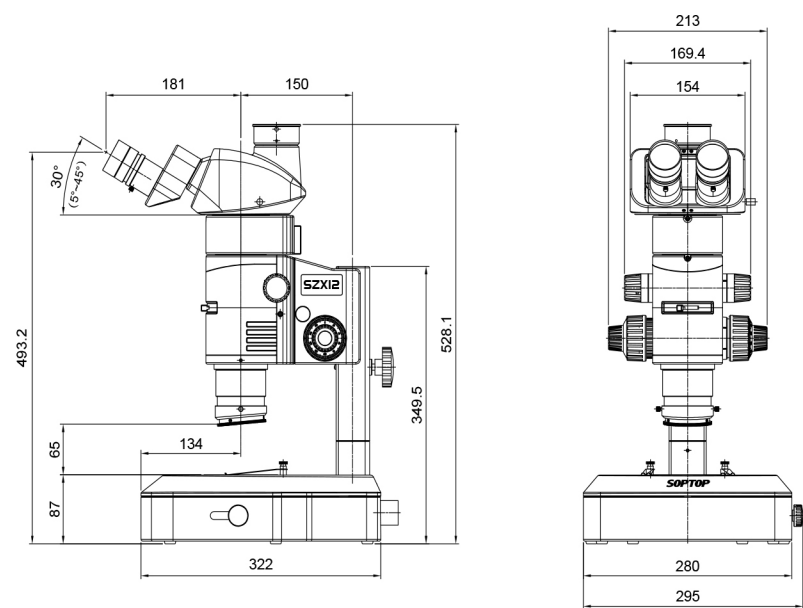
SZX12 Optical data

Eyepiece	10X / 23mm		15X / 16mm		20X / 12mm	
Main objective	magnification	field of view (mm)	magnification	field of view (mm)	magnification	field of view (mm)
0.5x	3.15x–40x	69.84–5.5	4.73x–60x	50.79–4.0	6.3x–80x	38.10–3.0
1.0x	6.3x–80x	34.92–2.75	9.45x–120x	25.40–2.0	12.6x–160x	19.05–1.5
1.5x	9.45x–120x	23.28–1.83	14.18x–180x	16.93–1.33	18.9x–240x	12.70–1.0
2.0x	12.6x–160x	17.46–1.38	18.9x–240x	12.70–1.0	25.2x–320x	9.52–0.75

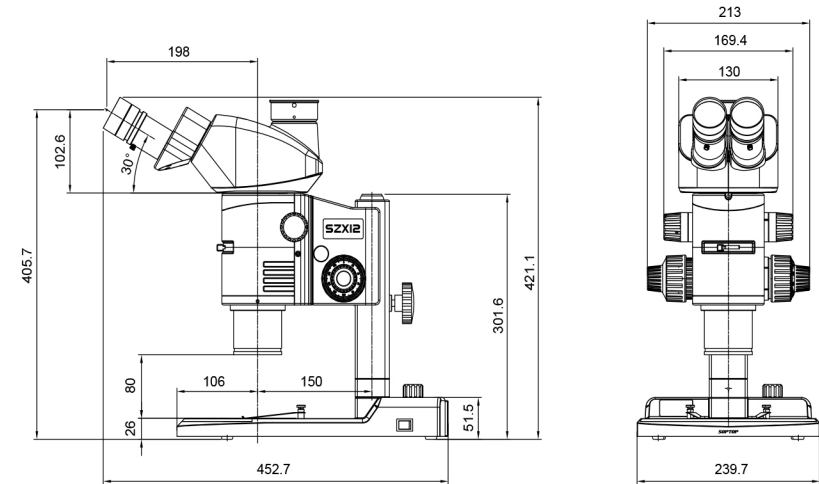
SZX12 (SZX12TTR head, SZX12B2 base): mm



SZX12 (SZX12TTR head, SZX12B2 base, Coaxial illumination) : mm



SZX12 (SZX12TR30 head, BL10 base): mm



SZX12 Specification

Viewing head	Tilting trinocular viewing head, 5~45 degree adjustable; binocular: trinocular= 100:0 or 0:100; interpupillary distance 50–76mm; fixed eyepiece tube with lock screw
	30 degree inclined trinocular head; binocular: trinocular=50: 50; interpupillary distance 50–76mm; fixed eyepiece tube with lock screw
Eyepiece	High eye–point wide field plan eyepiece PL10X22mm, diopter adjustable
	High eye–point wide field plan eyepiece PL15X16mm, diopter adjustable
	High eye–point wide field plan eyepiece PL20X12.5mm, diopter adjustable
Zoom range	Zoom range: 0.63X~8X, zoom ratio: 12.5 : 1; built–in aperture diaphragm; click stop for 0.63X、0.8X、1X、1.25X、1.6X、2X、2.5X、3.2X、4X、5X、6.3X、8X
Main objective	0.5main objective,working distance70.5mm
	1X main objective, working distance 78mm
	1.5X main objective,working distance31.1mm
Body	2X main objective, working distance 20mm
	Coarse and fine coaxial focus system, integrated body with focus holder, coarse range: 50mm, fine precision 0.002mm
Base	Plan base without illumination, with black & white plate (dia.100mm)
	Plan base with transmitted illumination (work with external 5W LED fiber); built–in 360 degree rotatable mirror, location adjustable
	Ultra–thin base, multi–LED (5W), with digital readout of light intensity and color temperature (3200~5600K)
Illumination	5W LED light box (size: 270X100X130mm) with single fiber (500mm), color temperature 5000–5500K; operating voltage 100–240VAC/50–60Hz, output 12V
	LED ring lamp (200 bulbs)
Camera adapter	0.5X/0.65X/1X C–mount

SZX12 System diagram

